

# MODEL: SP600 / SP600L / SP1200 SEMI-AUTOMATIC STENCIL PRINTER



## FEATURES

- **Huge print area capability**  
The huge print area capability allows printing up to 1200mm x 400mm. It accepts standard SMT frame sizes from 350 x 350 mm to 1480 x 500 mm (for SP1200), or 350 x 350 mm to 838 x 736 mm (for SP600L)
- **Vertical Separation of Stencil from PCB**  
4 corner ball screw system provides excellent separation control of stencil for high quality solder paste printing
- **Programmable Speed Control for both squeegee movement and stencil separation**
- **Dual Camera system for quick PCB alignment (optional)**

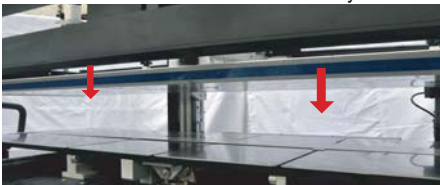
## EASY STEPS

Step 1: Place the PCB board on the slidable working table

Step 2: By pressing IN button, the working table will move toward inside automatically



Step 3: By pressing DOWN button, the stencil screen will move downward automatically



Step 4: By using magnifying camera, the operator can adjust the X, Y, Theta alignment easily and precisely

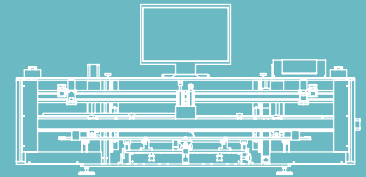


Step 5: By pressing START button, the squeegee will spread the solder paste steadily and automatically



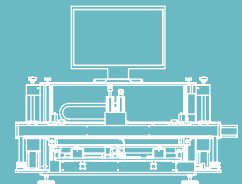
## SPECIFICATION

### SP1200



- Stencil Frame Size :  
350 x 350mm to 1480 x 500mm
- Printing Area :  
Max.1200mm x 400mm
- Board size :  
Max.1250mm x 410mm
- X- and Y-Axes range: +/- 13 mm
- Theta rotation: +/- 3.5°
- Underside Clearance: 25 mm
- Z-axis range: 0 - 35 mm
- Registration Repeatability: +/- 0.01 mm
- Overall dimensions (L x W x H):  
1719mm x 1006mm x 851mm
- Machine weight: 162kg

### SP600 / SP600L



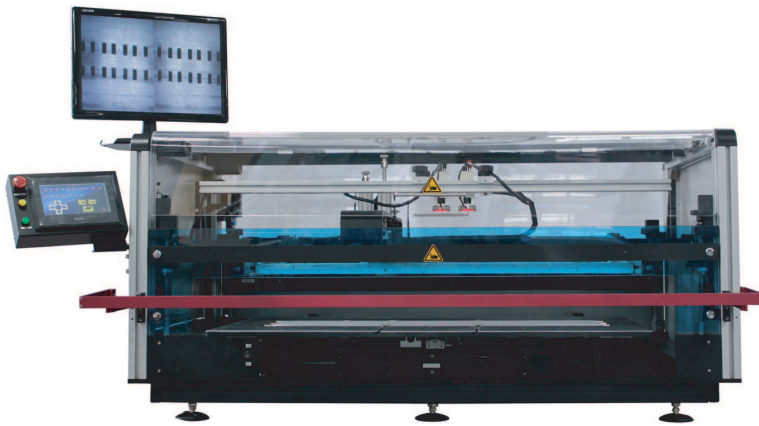
- Stencil Frame Size :  
350 x 350mm to 838 x 500mm (SP600)  
350 x 350mm to 838 x 736mm (SP600L)
- Printing Area :  
Max.600mm x 400mm (SP600)  
Max.600mm x 600mm (SP600L)
- Board size :  
Max.650mm x 410mm (SP600)  
Max.650mm x 650mm (SP600L)
- X- and Y-Axes range: +/- 13 mm
- Theta rotation: +/- 3.5°
- Underside Clearance: 25 mm
- Z-axis range: 0 - 35 mm
- Registration Repeatability: +/- 0.01 mm
- Overall dimensions (L x W x H):  
1064mm x 1006mm x 851mm (SP600)  
1100mm x 1100mm x 851mm (SP600L)
- Machine weight:  
108kg (SP600)  
135kg (SP600L)

We reserve the right to make changes without notice.



AUTOTRONIK-SMT GmbH  
Sulzbacher Str. 111  
92224 Amberg, Germany  
tel +49 (0) 9621-600 691  
fax +49 (0) 9621-600 692  
mail office@autotronik-smt.com  
www.autotronik.de

# MODEL: SP900 / SP900L SEMI-AUTOMATIC STENCIL PRINTER



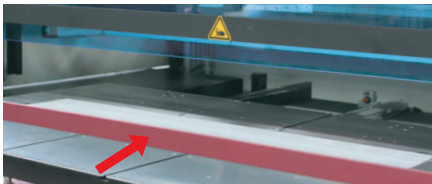
## FEATURES

- Huge print area capability**  
 The huge print area capability allows printing up to 900mm x 600 mm (SP900L), or up to 900mm x 400mm (SP900). It accepts standard SMT frame sizes from 350mm x 350mm to 1140mm x 750mm (SP900L), or to 1140mm x 550mm (SP900)
- Vertical Separation of Stencil from PCB**  
 4 corner ball screw system provides excellent separation control of stencil for high quality solder paste printing
- Programable Speed Control for both squeegee movement and stencil separation**
- Dual Camera system for quick PCB alignment (optional)**

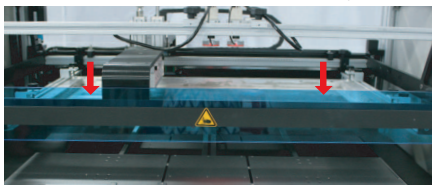
## EASY STEPS

Step 1: Place the PCB board on the slidable working table

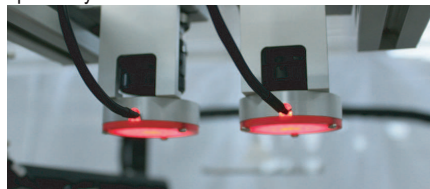
Step 2: By pressing IN button, the working table will move toward inside automatically



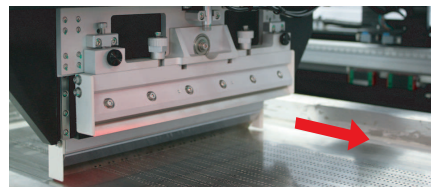
Step 3: By pressing DOWN button, the stencil screen will move downward automatically



Step 4: By using magnifying camera, the operator can adjust the X, Y, Theta alignment easily and precisely



Step 5: By pressing START button, the squeegee will spread the solder paste steadily and automatically



## SPECIFICATION



### SP900L

- Stencil frame size: 350 x 350mm to 1140 x 750mm
- Printing Area: Max.900mm x 600mm
- Board size: Max.910mm x 610mm
- X- and Y-Axes range: +/- 13 mm
- Theta rotation: +/- 3.5°
- Underside Clearance: 25 mm
- Z-axis range: 0 - 45 mm
- Registration Repeatability: +/- 0.01 mm
- Overall dimensions(L x W x H): 1702mm x 1323mm x 1051mm
- Machine weight: 185kg

### SP900

- Stencil frame size: 350 x 350mm to 1140 x 550mm
- Printing Area: Max.900mm x 400mm
- Board size: Max.910mm x 410mm
- X- and Y-Axes range: +/- 13 mm
- Theta rotation: +/- 3.5°
- Underside Clearance: 25 mm
- Z-axis range: 0 - 45 mm
- Registration Repeatability: +/- 0.01 mm
- Overall dimensions(L x W x H): 1702mm x 1123mm x 1051mm
- Machine weight: 155kg

We reserve the right to make changes without notice.



AUTOTRONIK-SMT GmbH  
 Sulzbacher Str. 111  
 92224 Amberg, Germany  
 tel +49 (0) 9621-600 691  
 fax +49 (0) 9621-600 692  
 mail office@autotronik-smt.com  
 www.autotronik-smt.de